

Arts REACH


Perry County Council of the Arts

February 2025





STAFF

Executive Director
Jasmine Colbert

Community Engagement Coordinator
Ariana Koch

Project Director
Rebecca Myers

Gallery Manager
Erin Sparler

SUPPORT

Drop-In Art Project Coordinator
Janice Bailor

Gallery Volunteer
Lane Partner

BOARD OF DIRECTORS

President
Allison Juliana

Vice President
Louise Warner

Treasurer
Jennifer Mitchell

Secretary
Lynne Reeder

Jessi Burkholder
Lauren Eichelberger
John Guarnera
Audra Hunter
Patti McLaughlin
Brittany Shetter
Karen Smith

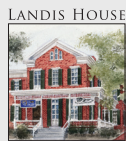


CONTACT US

PO Box 354, Newport PA 17074-0354
717-567-7023 | pcca@perrycountyarts.org
perrycountyarts.org



1 S. 2nd Street, Newport PA
Wed-Sat, 10-4



67 N. Fourth Street, Newport PA
Tuesdays & Thursdays, 10-4

Cover Image: "An Early Snow" by
PCCA member artist, Irene VanBuskirk

ArtsReach, February 2025

A copy of the official registration and financial information of the Perry County Council of the Arts may be obtained from the Pennsylvania Department of State by calling toll free, within PA, 1-800-732-0999. Registration does not imply endorsement. © 2025, Perry County Council of the Arts

A note from our President



Allison Juliana
Board President

ArtsReach is back! In the interest of keeping our members, donors, and community informed of all PCCA has to offer, we are going to publish our newsletter, *ArtsReach* each quarter.

A big thank you to everyone that donated to our annual appeal. Thanks to these unrestricted funds, PCCA is able to continue the high-quality programming you've come to expect and enjoy. We also want to better understand your interests in the type of programming we provide. Please take a few moments to complete our customer survey. We look forward to hearing from you!

At the gallery, we are currently featuring the exhibit HUGS by Ginny Streckewald. Her artwork will be on display through March 12, with a reception on February 8 from 1 to 4pm.

Youth Art Day, our annual showcase of visual art, literary, and performance talent from Perry County students, is also right around the corner. If you have a talent you wish to share, please submit your entry by February 5th!

To keep up with all of our programs, events, and classes, be sure to follow us on Facebook and Instagram!

Customer Survey

Let us know what you think!

perrycountyarts.org



PCCA Joins 2025 Match Madness

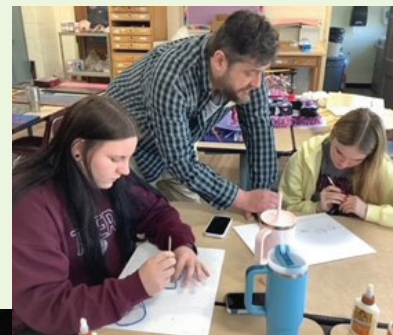
We're excited to join the 2025 Match Madness campaign by the Partnership for Better Health. This year, \$150,000 in matching funds will boost your donations.

Support PCCA in March to fund Youth Art Day, camps, workshops, exhibits and performances. One recent project, "Warm Shadows," showcases high school students' art under Teaching Artist Evgeny Krayushkin. Evgeny's own, original sculptures and paintings can be seen year-round at PCCA Gallery!

Donate online or mail a check to the Partnership for Better Health with PCCA in the memo line.

Thank you for your support!

Jasmine Colbert
Executive Director



ON THE CALENDAR

FEBRUARY

On display through March 12: Hugs at PCCA Gallery. Handmade fabric collages by member artist Ginny Streckewald. Free and open to the public.

Through February: Valentine's Day shopping and gifts at PCCA Gallery.

Wed., Feb. 5: Entries Due for Youth Art Day at PCCA Gallery by 4pm. Details at perrycountyarts.org/youth-art-day/.

Sat., Feb. 8, 1-4pm: Meet the Artist - Hugs exhibit by member artist Ginny Streckewald at PCCA Gallery. Free and open to the public.

Sat., Feb. 8, 10am-12pm: Drop-In Art at Newport Public Library featuring Valentine's Day and Easter themed crafts and cards. Free to attend. Details at perrycountyarts.org/drop-in-art/.

MARCH

Mar. 1 through Mar. 31: Match Madness: Match your March donations during this campaign.

Wed., Mar. 5, 6-8pm: Four-Leaf Clover Mosaic Class with Amanda Rife of Mosaic Montage at Landis House. \$55 - All materials included. Register at perrycountyarts.org/classes-workshops/ or call 717-567-7023.

Weds., Mar. 5, 12, 19, 26; April 2, 9: 6-Week After School Art Classes with Tom Oakes at Landis House. Geared towards public and homeschool students in grades 4-9. \$75 per student. Register at perrycountyarts.org/classes-workshops/ or call 717-567-7023.

Thurs., Mar. 6, 13, 20, 27; April 3, 10: 6-Week Art Class for All Abilities with Tom Oakes at Landis House. Great for all ages and abilities. Minors must be accompanied by an adult. Free to attend. Please note that students are expected to attend all 6 class sessions. Register at perrycountyarts.org/classes-workshops/ or call 717-567-7023.

Mar. 12 thru Apr. 30: The Art of Change photography/digital art exhibit by member artist Irene VanBuskirk at PCCA Gallery. Free and open to the public.

Sat., Mar. 15, 1-3pm: Art Talk: Aligning Creativity and Commerce: Trends, Techniques: Your Questions Answered at PCCA Gallery. Register at perrycountyarts.org/classes-workshops/ or call 717-567-7023.

APRIL

Sat., Apr. 5, 11am-3pm: Youth Art Day at Newport High School. Join us for the largest showcase of K-12 Perry County student art, literature, and performance! Adult admission \$5; students get in free. An awards ceremony will be held at 1pm in the auditorium.

Wed., Apr. 16, 6-8pm: Peeps Mosaic Class with Amanda Rife of Mosaic Montage at Landis House. \$55 - All materials included. Register at perrycountyarts.org/classes-workshops/ or call 717-567-7023.

Sat., Apr. 26, 1-4pm: Meet the Artist - Photography and Digital Art exhibit by member artist Irene VanBuskirk at PCCA Gallery. Free and open to the public.

Apr. 30 through Jul. 8: Jewelry exhibit by member artist Marlene Quigley at PCCA Gallery. Free and open to the public. Details at perrycountyarts.org/exhibits.



LOCAL THEATRE

MARCH 6-8

West Perry High School
presents:
A-Wop Bop A-Loo Bop

MARCH 14-16

Susquenita High School
presents:
Anastasia

MARCH 27-29

Newport High School
presents:
High School Musical

MARCH 27-30

Greenwood High School
presents:
The Little Mermaid

APRIL 10-12

Lions Community Theatre
- New Bloomfield, presents
Chicago, at West Perry High School. For more information visit, nblions.org



LOCAL OPEN MICS MONTHLY

Every 3rd Friday, 6-7pm at Newport Public Library.

Open Mic Night featuring local musicians, poets, and storytellers. For more information, contact Newport Public Library at 717-567-6860.

Annual Membership Awards

Nominate your favorite artists, volunteers, individuals or organizations for our 2024-2025 awards!

perrycountyarts.org | 717.567.7023

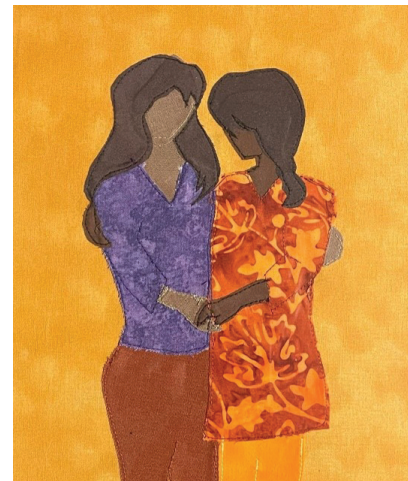


ON DISPLAY

Hugs by Ginny Streckewald at PCCA Gallery through March 12

Reception: Saturday, February 8, 1-4pm

The comforting embrace of a hug is a universal language of connection. Artist **Ginny Streckewald's** exhibit invites us to reflect on the power of hugs in our lives. "I don't think I fully realized how wonderful a hug could be until COVID changed our lives in 2020," Ginny shares. From the protective hug of a parent to the reassuring side hug of a trusted friend, her works explore the many ways hugs bring comfort, safety, and unity.



Photography & Digital Art by Irene VanBuskirk at PCCA Gallery, March 19-April 30

Reception: Saturday, April 26, 1-4pm

Change is a constant in life, and photographer **Irene VanBuskirk's** exhibit invites us to embrace its beauty. "Nothing stays the same—everything grows and transforms, just like we do," Irene reflects. Inspired by the ever-changing seasons, Irene focuses on trees as storytellers, showcasing their lush green leaves in summer, fiery hues in autumn, and bare elegance in winter, often sparkling with snow and ice. Recently, she has begun layering photographs to create rich, textured compositions that blend light, shadow, and time, offering a painterly perspective on the magic of change.



Irene VanBuskirk 2023



Join Today! 3 CSA Share Options

- 1.) Total Season – Apr. to Dec. (35 wks)
- 2.) Summer Share - June to Oct. (20 wks)
- 3.) Sampler Share - Any Month May to Nov. (4wks)

Local Farm Family, Celebrating our 31st CSA Season

Full or Medium CSA Share Sizes Available

More than 30 Pick-Up Locations:
Cumberland, Dauphin, Lebanon & Perry Counties

538 Spiral Path Ln., Loysville, PA • 717-789-4433 • csa@spiralpathfarm.com



Sign up now at:
SpiralPathFarm.com



717.567.7606



The Art of Beer

LOCALLY CRAFTED

Gifts for the...



Plant Aficionados

Fused glass plants & plant stakes, night lights by Mosaic Montage. Decorated potted plants by CEE BEE Designs.



Creative Kids

3D Tunnel Books by EyeConnect Crafts. Crochet axolotls & salamanders by Sisters of Stich Craft. Hand-sewn hearts by La Rue de Fleurs. Art pins & stickers by Owlfeathers Watercolor.



Foodies

Fused pink glass platter by Diane Hoffer. Pepper mills by Bill Gray. Cheese knife & spatula by Wise Wood Creations. Wooden spoon by CEE BEE Designs. Charcuterie boards by Buffalo Mountain Craftworks.



Book Lovers

Fused glass trees by Mosaic Montage. *The Trees Remember*, series by local author, Joyce Kieffer. Pressed flower bookmarks by Karen Alleman. Floral frameable cards by Floral Harvest Designs.



Knitters & Crocheters

Knit socks by Birgit Hoppenjans. Seasonal, hand-poured vegan candles by Moth to Flame Candles. Hand-spun & dyed yarns by Lynne Hoffman. Yarn bowl by Muddy Rox Pottery. Heart baskets by Teena Beutel. Stained glass heart suncatcher by Conni Herr.



Tea & Coffee Drinkers

Mugs by Hometown Potters' Studio, and Michelle Hare. Honey pot by Muddy Rox Pottery. Woven mug coasters by Lynne Hoffman.

Visit us in-person! Wed-Sat 10AM - 4PM | 1 S. Second St., Newport, PA | 717.567.7023



ARTIST DEVELOPMENT

Aligning Creativity and Commerce: Trends, Techniques: Your Questions Answered
Free event for artists | Register online at perrycountyarts.org/artist-development/

March 15, 1-3pm at PCCA Gallery

CLASSES & WORKSHOPS

Whether you're interested in relaxing mosaics or 6-week art classes, there's something for everyone. Join us for an inspiring and creative experience in 2025! **Register at perrycountyarts.org**

Opportunities made possible through EITC partners and The Stabler Foundation.



6-Week After-School Art Classes for Public & Homeschoolers | Grades 4-9

March 5, 12, 19, 26, April 2, 9 at Landis House

Instructor: Tom Oakes

Our after-school art classes provide an affordable opportunity for public and homeschool students in grades 4–9 to explore their creativity outside the classroom. Classes are held at Landis House in Newport, PA, with time slots from 2:00–3:30 p.m. and 4:30–6:00 p.m. Past projects have included printmaking, pottery, drawing, and more. Our upcoming series may include projects in wood working and copper enameling, just to name a few!

6-Week Art Class for All Abilities | All Ages

March 6, 13, 20, 27, April 3, 10 at Landis House

Instructor: Tom Oakes

Whether you're 6 or 106, our 6-week series of art classes offers accessible and enriching art education. These classes are designed to welcome individuals of all abilities. Past projects have included paper making, pottery, stained glass, candle making, mosaics, fiber arts, printmaking, drawing, painting, and more. Our upcoming series may include projects in wood working and copper enameling, just to name a few!

Summer Art Camps | Grades 4-9

June - August

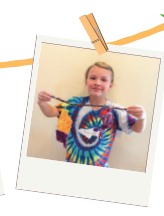
Instructor: Various

Mark your calendars—early bird registration for summer camps opens in March! Don't miss the opportunity to register your child for a reduced rate. Our 2025 summer camps will feature exciting topics, including theatre, art in nature, fiber arts & sewing, watercolor painting, and pottery. Scholarships are available, and application forms can be found online in mid-March at perrycountyarts.org. Join us for a summer full of creativity and fun!



MARK YOUR
CALENDAR!

KIDS
SUMMER
ART
CAMPS



View details at perrycountyarts.org



CALL FOR ENTRIES



11th Annual Juried Art Exhibition

Entries due July 9

On display September 25 through November 20

Reception: September 26, 6-8pm, awards at 7pm

Calling all 2D and 3D artists, makers, and craftspeople! Enter your original art into Perry County Council of the Arts' 11th Annual Juried Art Exhibition at Landis House, Newport, PA.

1st, 2nd, and 3rd place prizes for each art category, as well as a People's Choice winner will be awarded. Selected 2D works will go on to be displayed at the Pennsylvania State Capitol during December 2025 as part of our Capitol Art on Tour Exhibit.



27th Annual Poetic Excellence Awards

Entries due June 11

Awards Ceremony Saturday, October 4

Little Buffalo Festival, Little Buffalo State Park, Newport, PA.

We encourage local poets to submit their original works to this year's Poetic Excellence Awards. 1st, 2nd, and 3rd place prizes will be awarded, as well as the Perry County Poet Laureate Award and Honorable Mentions.

Entries for all contests may be submitted at perrycountyarts.org

20
25

Annual visual art, literary
and performance showcase
for K-12 Perry County students!

**SUBMISSIONS DUE
FEBRUARY 5, 2025**

SUBMISSIONS MAY BE MADE THROUGH YOUR
SCHOOL OR BY A PARENT, USING THE QR CODE

QUESTIONS?

CONTACT: YAD@PERRYCOUNTYARTS.ORG
717.567.7023



PRESENTS

**YOUTH
ART
DAY**

APRIL 5, 2025

NEWPORT HIGH SCHOOL

500 CAROLINE ST, NEWPORT, PA 17074

\$5.00 ADMISSION - ADULTS

PennianBank

Rooted in our
Community
SINCE 1864

pennian.bank | NMLS 561538

Member
FDIC

Connect with us:
@ f in



Grab Some Sunshine

Every item in our kitchen is
made from scratch.

- COFFEE DRINKS
- BREAKFAST SANDWICHES
- BAKED GOODS
- LUNCH SPECIALS
- HOME MADE CONDIMENTS

Menu changes seasonally!

12 N Carlisle St • New Bloomfield, PA 17068 | farmersdaughterscafe.com

THANKS

For Your Support!



Thank You to Our EITC Partners!

We extend our heartfelt gratitude to Orrstown Bank, PPL Electric Utilities, Capital Blue Cross, Pennian Bank, DuMor, Weis Markets, and UPMC for their generous support of our K-12 programming. Your contributions make a significant difference in our students' lives and our community's future.

Thank you for your commitment to education!

The Commonwealth of Pennsylvania has a number of programs providing tax credits for businesses. If you would like to learn more about making a donation to PCCA that qualifies for state tax credit, please contact us.