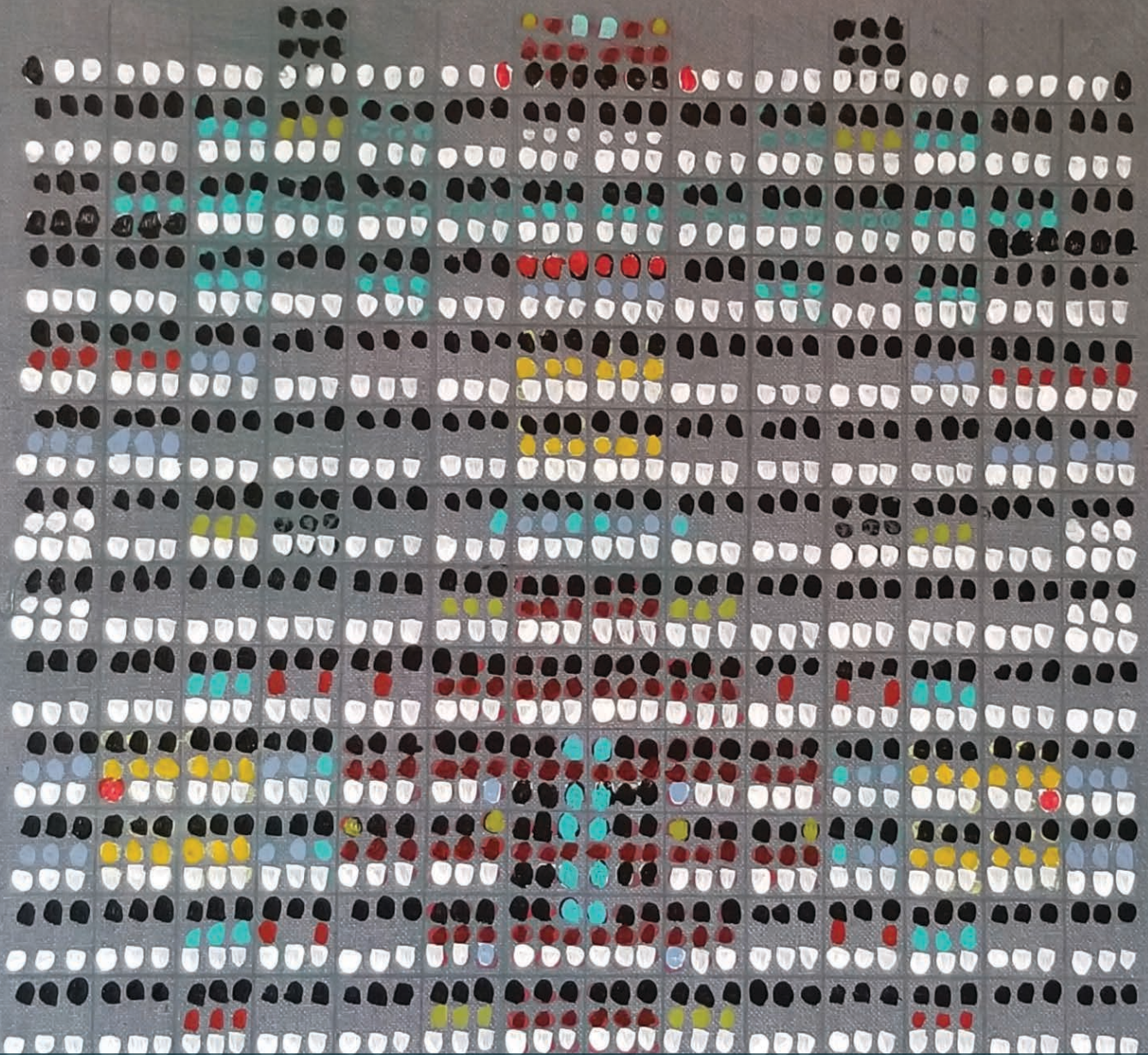




# Arts REACH

*Winter 2021*



## CREATIVE RESILIENCE

As the world continues to adapt to a new normal, we look to the power of the arts.





## STAFF

**Executive Director**  
Jasmine Colbert

**Communications Director**  
Missy Smith

**Arts in Education Director**  
Rebecca Covert

**Finance Manager**  
Kathleen Meglio

**Gallery Manager**  
Leah Keilman

**Gallery Assistant**  
Barb Vollrath

**Drop-In Art Coordinator**  
Janice Bailor

## BOARD OF DIRECTORS

**President**  
Richard Steffy

Kurt Hower  
Patti McLaughlin

**Vice President**  
Jessie Ellis

Lynne Reeder

**Treasurer**  
Jennifer Mitchell

Ann Shull  
Karen Smith

If you are interested in volunteering on a board service committee or working group, or serving on the board, please email [jasmine@perrycountyarts.org](mailto:jasmine@perrycountyarts.org).

## CONTACT US

**Perry County Council of the Arts**

PO Box 354, Newport PA 17074-0354

717-567-7023 | [pcca@perrycountyarts.org](mailto:pcca@perrycountyarts.org)

**[perrycountyarts.org](http://perrycountyarts.org)**



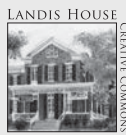
### ArtsReach, Winter 2021

A copy of the official registration and financial information of the Perry County Council of the Arts may be obtained from the Pennsylvania Department of State by calling toll free, within PA, 1-800-732-0999. Registration does not imply endorsement. © 2021, Perry County Council of the Arts

Cover photo: "Mask" by Thom Kulp (See more, pg. 6)



One S. Second Street, Newport PA  
Wed-Sat, 10-4



67 N. Fourth Street, Newport PA  
Currently only available by appointment



PCCA receives state arts funding support through a grant from the Pennsylvania Council on the Arts, a state agency funded by the Commonwealth of Pennsylvania and the National Endowment for the Arts, a federal agency.



## Dear Members,

**Let us say farewell to 2020 and usher in the new year!**

We could all do with fewer challenges and less critical decision-making in 2021.

**I would like to express my appreciation and pride in our dedicated and talented staff team.** When unstoppable forces caused the world to shut down, PCCA staff remained focused and cleared a path forward to connect and heal our community through creative programming, all while attending to at-home learners, toddlers, and health concerns.

**The work of our Communications Director became imperative as we were now living in a virtual world and she was our virtual girl.** Missy kept the lines open with Instagram artist takeovers, positive and inspiring social media posts and PCCA status updates. As she also maintains a hand in the exhibitions, she orchestrated *Art Uplifts*, a series of positive images and inspiring quotes by our member artists that was displayed along public walking trails during the fall.

**Our Drop-In Art Coordinator quickly and adeptly translated her usual in-person make-and-take art program to virtual project tutorials.** Janice sent project kits to three Perry County preschools to engage more than 100 children and families. Project videos and supplemental content exist on our website and YouTube page for creators of all ages to view anytime.

**Fortunately, our Arts in Education Director has been exploring partnerships with community groups and professional development initiatives for teaching artists.** So, when schools closed in March, Rebecca hit the pause button and focused on increased professional development opportunities as well as assisting our rostered teaching artists with providing virtual content for their students. Our virtual development series partnered Bucknell's Small Business Development Center and artists to aid businesses with brand strength and virtual customer connections.

**When it became permissible, PCCA Gallery staff was eager to resume open hours.** Leah and Barb wanted to continue to serve our talented artists and valued customers. That meant following the safety guidelines to allow in-person business and adding more items to the webstore to make it easier to buy artists' works online.

**In 2020 virtual fashion, we hosted our annual Youth Art Day, Poetry Awards, Local Treasures fundraiser and Annual Membership Meeting online.** This model will likely persist into 2021 with in-person elements reintroduced over time. We are planning programming that is adaptive and able to maintain its course in the face of adverse conditions and we are looking forward to another year of shared creative experiences.

**Jasmine Colbert**  
Executive Director



# ADAPTING *Creatively*

**The past year has thrown many challenges our way, but we are working hard to stay connected through the arts.**

**A**rtists are no strangers to creative adaptation. Dripped or spilled paint on canvas or over-working details of an art piece can immediately resonate as mistakes, setbacks or even failures. A blurred figure walking through a photo shoot that was painstakingly envisioned and set up might be frustrating. Getting words down on the page only to feel as though they are hollow or not quite right can be deflating. But, with creative mishaps can come new possibilities that we hadn't considered previously.

As innately creative beings, people find ways to adapt when things do not go according to plan. And, over the course of the last year, we have all gotten a lot (if not, too much) practice acclimating to challenging circumstances.

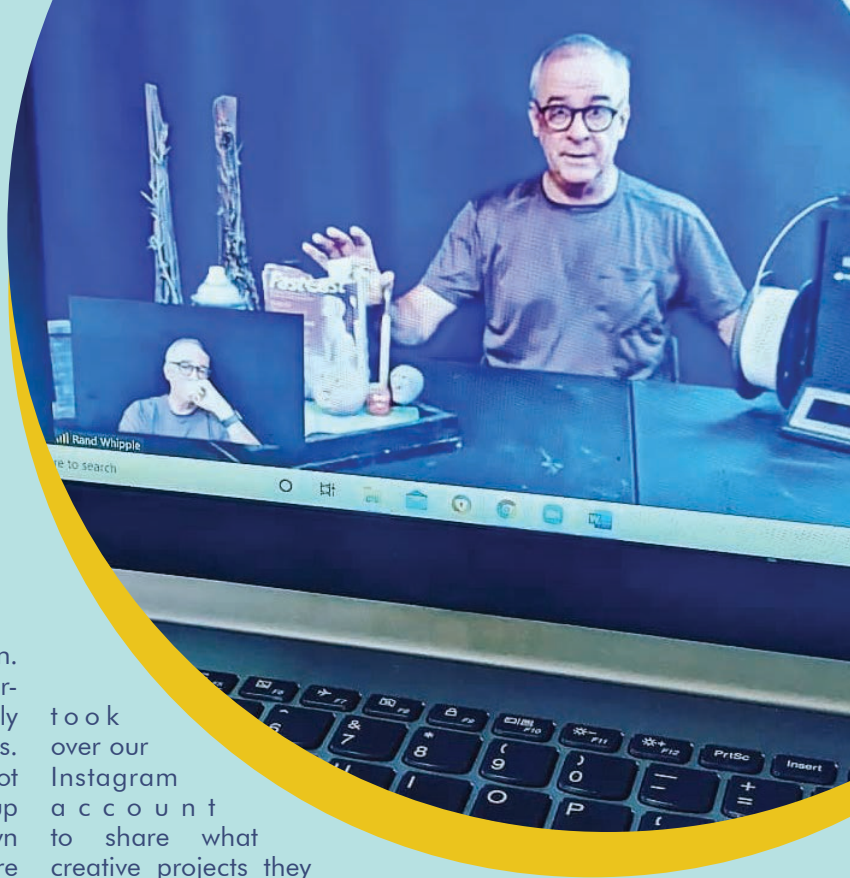
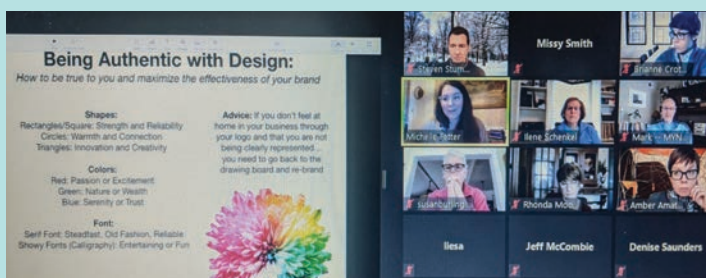
At Perry County Council of the Arts, adaptation has been at the forefront of our work since March of 2020. Unfortunately, careful program planning and organization was halted in the face of the COVID-19 pandemic. While much of our staff continues the (mostly) work-from-home life while juggling family obligations and children learning from home, we have remained focused on how we can build community through the arts in these unusual and unprecedented times.

As much of our programming took a pause as our organization regrouped and transitioned to a new normal, PCCA staff got to work moving our programming online.

Our popular Drop-In Art program got a digital makeover as a series of Drop-In Art @ Home videos offered on YouTube, our website, and social media, so families can safely create at home. (Read more on page 5.)

To keep our Coffeehouse attendees performing and engaged with one another, we brought this beloved program to social media, sprinkling people's new feeds with original poetry and music by some talented poets and musicians.

PCCA Member Artists Carolyn Pio and Todd Tabb



took over our Instagram account to share what creative projects they were working on in quarantine. Our members and supporters got to take a behind-the-scenes look at the lives of artists whose beautiful work line the shelves at PCCA Gallery, connecting the creator with the well-loved art and gifts our customers have come to know.

On August 31 and September 14, PCCA offered "The Brave New World: Intro to Video & Streaming for Educators and Teaching Artists," a virtual professional development workshop for Pennsylvania educators and teaching artists, led by PCCA Teaching Artist Rand Whipple, of Box Of Light Studio.

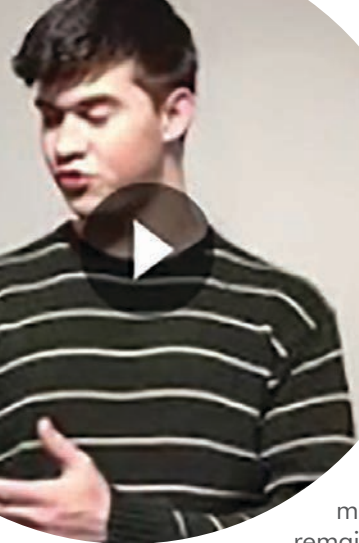
This workshop was designed to give educators and artists the basic knowledge needed to make their online lessons clearly heard, well-lit and easy to watch.

In addition, Rand developed similar programming to help PCCA teaching artists translate their in-person lessons into video and streamed versions of those activities. Participants worked to shape their lessons as teaching videos and identified the best sites/apps for sharing those videos. Each participant created a livestreamed version of their activity incorporating graphic overlays, supportive text and pre-prepared video.

Early in the year, PCCA teamed up with Bucknell University's Small Business Development Center to offer "Breaking Brand: Creative Approaches to Business Engagement," with Teaching Artists Whipple, Brianne Croteau and Michelle Fetter; and Communications Director Missy Smith. The brand engagement series was designed to guide small business owners toward sustaining and succeeding in their businesses by understanding, designing, energizing, communicating, and strengthening their brand.

Most recently, we held our annual Regional Poetry Out Loud competition virtually with three local participants: Zachary Marshall, Juniata High School; Isabella Melocu, East Juniata High School; and Brooke Mitchell, West Perry High School. Taking the Regional title for the second year in a row was Marshall, delivering clear, emotive and accurate recitations of "American Smooth" by Rita Dove, "Breakfast" by Mary Lamb,





and "The Oldest Living Thing in LA" by Larry Levis.

As we step further into this new year, we will continue to engage our community in creative, virtual ways until we are able to see each other in person again. Our historic museum, Landis House, remains closed to the public until it is safe to re-open.

We are eager to welcome you back to our beautiful Creative Commons for art exhibitions, concerts, workshops, meetings and more! In the meantime, please visit us at PCCA Gallery to explore stellar displays of local artwork. PCCA Gallery exhibitions will resume this year, starting with a solo showing of Thom Kulp's abstract, geometric paintings. We will not host opening receptions until further notice, but we will offer Walk Through Open House events in socially distant style to maintain safety for our artists, customers and staff.

To safely offer visual art exhibitions, PCCA created its first outdoor art gallery experience at local community parks. With the theme "Art Uplifts," this showing of inspiring artwork was printed on durable yard signs and displayed along walking paths to enhance the already beautiful scenery. And, we have plans to continue these outdoor shows in 2021.

If we have learned anything from the challenges of the past year, it is that there are always ways to creatively adapt to what life throws at us. It certainly hasn't been easy, and the road ahead is still going to be littered with obstacles, unusually high levels of multi-tasking, sadness and loneliness. But, we can also experience bright points through the powerful and beautiful medium of art.

Stay connected with us online and come say "Hi" to us at PCCA Gallery. We are here for you, our members and artists, to help support and enrich your life through the arts virtually and in-person. 🎨



In November 2020, we bid a happy retirement to Teena Beutel, a PCCA staff member with seven years of service as Finance and Landis House Manager. As a previous owner of Visions Service Adventures, Teena used her leadership and business operating experience to provide reliable support to PCCA's Executive Directors and staff team members.

As a former board member for Newport Public Library and a volunteer for their Bike4Books' Support and Gear (SAG) team, Teena was always prepared to provide refreshments for various PCCA programs and jumped at the chance to highlight historical and artistic elements on our bus trips. As an artist, Teena has received accolades for her basket weaving, and has exhibited and sold her works in PCCA's exhibitions. She and her husband Paul have been stalwart supporters and volunteers, and will remain a part of our PCCA staff family.

## Please help us welcome Kathleen Meglio



Kathleen joined PCCA in November 2020, taking over the role of Finance Manager. She has been volunteering for PCCA since 2004, collecting tickets at Little Buffalo Festival, leading the Country Casual fundraising committee as chair and guiding the board as president. Kathleen comes to PCCA with both a love of the arts and numbers.

She graduated from Penn State University in 2005 with a Bachelor's degree in Art and a concentration in Printmaking. Although she has not had the opportunity to do intaglio or lithography since graduation, they are still her favorite techniques. Relief prints, pottery and kitchen creations is where she continues to study and evaluate her art. As for the numbers, she most recently departed MSC Business Services, a service for PA Farm Bureau members, after holding roles as Payroll Technician, Tax Accountant, Director of Training, and Assistant Manager.

"This position is like my unicorn," says Kathleen. "It's one of those magical spots where I can use both my left and right brain experiences to contribute to an organization and mission I really believe in."

## VIRTUAL WORKSHOPS



*Virtual Paint Together*  
March 13, 4-6 p.m.  
via Zoom with Leah Keilman

Join us from the comfort of your home to learn step-by-step how to create a beautiful painting to display in your home.



*A Novel Idea - Crafting a Memoir*  
April 7-28, Wednesdays, 6-8 p.m.  
via Zoom with Don Helin

Paint a picture of a memorable moment or experience and share your unique personal journey through creative writing in this virtual workshop.

# DROP-IN ART @ HOME

Drop-In Art @ Home | Polar Bear Splatter Watercolor | #stayathome #withme



**D**rop-In Art is a well-loved art program that, prior to pandemic times, welcomed young children to get creative in-person alongside of their caregivers and other young artists.

Over the years, Drop-In Art has remained free to all thanks to the support from the Arts for All Partnership, a partnership between the Cultural Enrichment Fund and the Greater Harrisburg Community Foundation, a regional foundation of The Foundation for Enhancing Communities; Community Aid; The Lotus Fund; Margetts Foundation; McCormick Family Foundation; Members 1st Federal Credit Union; Newport Civic Club; and Pennsylvania Council on the Arts.

Because of the generosity of these funders, we have been able to expand our reach to Roseglen United Methodist Church, Duncannon, where this program is generally held monthly, when there isn't a pandemic. And, when it was safe to do so, Drop-In

Art would travel to various events to add a creative element to special community days.

At every turn, Janice Bailor has greeted young artists with a warm smile and infectious artistic energy, encouraging kids and adults to have fun with art. It is truly heartwarming to watch proud young visitors leave Drop-In Art carrying their unique pieces of artwork to display and enjoy at home.

When COVID-19 forced us to rethink in-person programming, Janice took up the challenge of creating Drop-In Art @ Home craft tutorial YouTube videos, so that families can continue to get creative while we cannot meet in person. She is thoughtful in her project selections that reflect the time of the year or holidays and that can be made with supplies and materials you may already have around the house.

As we continue to offer Janice's tutorial videos, we are growing our YouTube presence for more young artists to engage in creativity when we cannot meet in person. Be sure to subscribe to our channel so that you don't miss any fun art projects!

 **YouTube**  
Subscribe to our channel!





# ON AND OFF THE GRID

Abstract paintings  
by Thom Kulp

February 13 - April 10

In this colorful, geometric abstract exhibition, Thom Kulp explores ideas he first encountered while enjoying the artwork of Canadian American artist, Agnes Martin, who, in her later years, worked exclusively in grid designs. While her work adhered to strict "rules" of her own making, Thom was compelled to develop ideas that were not as particular in keeping precise shapes and patterns.

This show presents Thom's interpretation of the grid format as a viable means of artistic expression and a metaphor for the restrictions that we have all had to deal with during this pandemic year.



## About the Artist

Like many artists, Thom Kulp has always engaged in some sort of creative endeavor. His journey began with crayons and pencils as a child and progressed to watercolors, oils, and acrylics later in life. Along the way, Thom has explored collage, collagraphy, encaustic, block printing, and mandala drawing. Some of his latest pieces venture into the 3-dimensional realm, but have not, yet, become true sculptures. They are more akin to bas-reliefs.

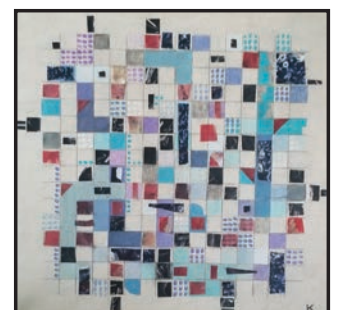
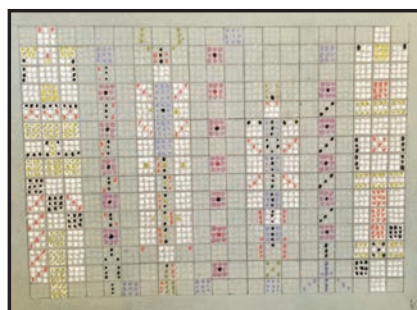
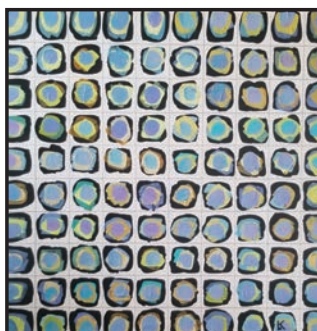
Thom studied painting and drawing at Harrisburg Area Community College with colorist painter Edith Socolow, who influenced him in the realm of abstract art. Color as subject matter became a revelation to him, and his current work is still highly influenced by this. After studying Experimental Mixed Media with Linda McCloskey at the Art Association of Harrisburg (AAH), he took over that class and taught it for several years at AAH, as well as at the York Art Association in York, Pa.

In addition to studying with Linda, Thom has taken classes with Julie Yontz-Rupp, Phyllis Disher-Fredericks and Ron Schloyer. He has conducted various workshops in experimental mixed media, collagraph printing, mandala making, and painting in the style of Jackson Pollock. Currently, he teaches students in his home studio in Linglestown, Pa. Thom has participated in many local shows and won numerous awards for his art.



## WALK THROUGH OPEN HOUSE

Stop by on March 20 between 12-3 to meet the artist! Masks & 6 ft. social distancing required.



# 2020 JURIED ART EXHIBITION WINNERS

PCCA's 6th Annual Juried Exhibition featured outstanding local and regional artwork, curated by Juror Danny Bracken, exhibitions manager at The Mattress Factory, Pittsburgh.

Featured artists included Alex Bellotti, Gail Walden Coleman, Chet Davis, Russell Fry, Roberta Garlock, Lynne Hoffman, Cynthia Holleran, Joyce Inderbitzin, Deb Kreiger, Miriam Landes, Dan Lawler, Hunter Metcalf, Francis Ranck, Gregg Silvis, Harry Spilker, Louise Thomas, Karen Van Newhyzen, Alyssa Waldron, and Jonathan Wert, III.

PCCA awarded the following artists with top awards, as chosen by Bracken.

## BEST OF SHOW

*The Red Cane*, oil painting by Alex Bellotti

## 3D CATEGORY

1st: *Green Colored Pencil Tree*, Francis Ranck

2nd: *Simple Elegance*, Roberta Garlock

3rd: *King of the Skies Spirit Vessel*,  
Joyce Inderbitzin

## PAINTING

1st: *Black Throated Green Warbler*,  
Jonathan Wert, III

2nd: *Essential Break*, Chet Davis

3rd: *Last Catch of the Day*, Alex Bellotti

## PHOTOGRAPHY & DIGITAL

1st: *Division*, Louise Thomas

2nd: *Angry Ocean*, Russell Fry

3rd: *Bee on Sunflower*, Russell Fry

## WATER MEDIA

1st: *Cottontail on Alert*, Hunter Metcalf

2nd: *Heading in the Deep Blue*, Deb Kreiger

3rd: *Consciousness Crashing Through*,  
Gail Walden Coleman

## OTHER MEDIA

1st: *The Moroccan Guide*, Karen Van Newhyzen

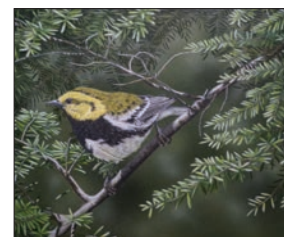
2nd: *Barn, VII*, Lynne Hoffman

3rd Place: *Copper Waves*, Gregg Silvis



## PEOPLE'S CHOICE

*Consciousness Crashing Through*,  
water media  
by Gail Walden Coleman



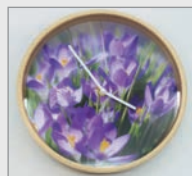
## CALLS FOR ART

Find complete entry details at [perrycountyarts.org/call-for-artists](http://perrycountyarts.org/call-for-artists)



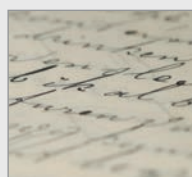
### Youth Art Day (virtual) Entry Deadline: March 15

Students attending school or residing in Perry County are invited to submit artwork for Virtual Youth Art Day 2021. Categories include dance, music, drama, visual art, video, poetry, essay, short story and graphic design.



### Home Goods Show RSVP Deadline: March 22

Submit your art or handmade items to this spring showing of on-trend home goods that are perfect for spring decorating and complement the trends and colors of the season. (Rescheduled from 2020.)



### Poetic Excellence Awards Entry Deadline: April 16

Poets are invited to submit original works to our annual contest. Anyone may enter; however, only Perry County residents are eligible for the title of Perry County Poet Laureate. Other prizes include First, Second, Third, Honorable Mention, Kenneth P. Allen Award for poems written on the theme of "Love in the Time of Coronavirus," and the NEW Siddy David Award for poems with a theme of "Gratitude."



# CREATED LOCALLY

Decorate Your Home  
Give Unique & Thoughtful Gifts  
Support Local Artists



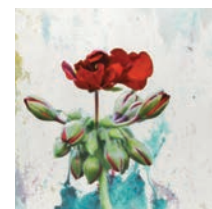
**Out of the Ashes**  
Mixed media  
JoAnne Finkle | \$325



**Distant Black Trees**  
Pressed flower picture  
J. Bees | \$72



**Whimsical Hearts**  
Watercolor & ink  
Chris Gallo | \$35



**Reaching**  
Photography  
Irene VanBuskirk | \$45



**Snow slim neck bottle**  
Stephen Cusick | \$30



**Felted meditation mat**  
Felting, Crissy Miyake | \$50



**Nut bowl**  
Bill Gray | \$65



**Copper cuff**  
Lori Campbell, LoMo Studio | \$60



**Seed of Light**  
Evgeny Krayushkin, Zheka | \$25



**Stained glass snowflake**  
Connie Herr | \$27.50

PCCA Gallery - On the square in Newport, PA

HOURS: Wed - Sat, 10-4

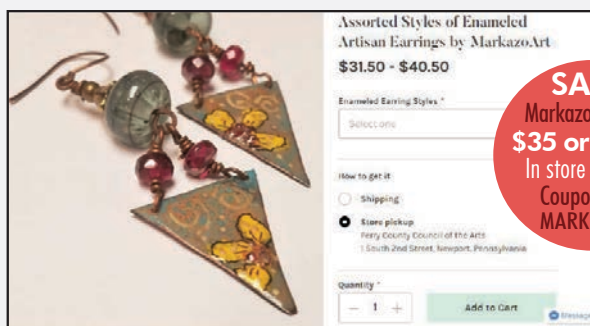
**Convenient. Fast. Easy.**

**Shop for Local Art & Handmade Gifts Online!**

Enjoy the convenience of shopping online, while SHOPPING SMALL and SUPPORTING THE ARTS.

Have your items shipped to you or enjoy free pickup at PCCA Gallery!

**perrycountyarts.square.site**



**SALE!**  
Markazo earrings  
**\$35 or 2/\$50**  
In store & online  
Coupon Code  
MARKAZO50



# SUPPORTERS OF THE ARTS

Thank you to the following financial donors for their generous support of our mission.  
These lists include contributions that reached our office from July 1 to December 31, 2020.

## Arts in Education EITC Approved Donors

Pennian Bank  
PPL Electric Utilities  
Weis Markets

## Drop-In Art

The Foundation for  
Enhancing Communities

## General Fund

Matthew Bennett  
June & James Bricker  
Scotty Brown  
Wendy Brunner  
Jack & Vickie Cameron  
In Memory of Carolyn Domlesky  
Lauren Eichelberger  
Helen Ernest  
Mary Alice High  
Michelle Jones  
Michelle Kurtz  
George & Carrie Lyter  
Make My Donation Inc.  
Jennifer Matthias  
Bob & Kriss Mulkey  
Network for Good  
Rakuten Member Services  
Helen Ritter  
Jamie & Scott Shedd  
Ann & Dick Shull  
Jane & Larry Shull  
Wendy Shumaker  
Richard & Dana Steffy  
United Way of Capital Region  
Tom & Carol Vracarich  
Carol & Jed Zaitz  
Amazon Smile

## Giving Tuesday

Devin Albrand  
Lory Barnhill  
Krista Beljan  
BJ Berquist  
Laura Campbell  
Jon & Jasmine Colbert

John & Kay Cramer  
Stephen Cusick  
Donna Donnelly  
Jessie Ellis  
Ann Fleisher  
Biruta Hansen  
Amy Hazel  
Jane Hoover  
Cynthia Holleran  
Kurt & Amie Hower  
John Kinzer  
Lorelee Koetje  
Michelle Kurtz  
Linda & Dave Kutz  
Richard & Edna Little  
Chris Lyter  
Patti & David McLaughlin  
Gloria McPherson  
Kathleen Meglio  
Katherine Michetti  
Rebecca Myers  
Debra & Charles Nyce  
Tony & Anna Oliveri  
Ann & Dick Shull  
James & Suzanne Smith  
Missy Smith  
Gwen Soult  
Louise Thomas  
Lynne Murray Trace  
Victoria Ziegler

## Landis House

Kurt Hower  
McCormick Family Foundation  
The Foundation for Enhancing  
Communities

## Local Treasures Fundraiser

*In-Kind Donations*  
Jane & Bill Allis  
Artisan Pizza  
Connie Betz  
Paul Beutel  
Teena Beutel  
Blue Mountain Outfitters  
Laura Campbell

Rene Campbell  
Jon Colbert  
Stephen Cusick  
Daniel & Adeline Farber  
Betsy Geesaman  
Don Helin  
Michael Higgins & Lynne  
Pickens  
Stephen Hower  
Lisa Lyter  
Patricia McCarty  
Members 1st Federal  
Credit Union  
Steve & Laura Messner  
Midway Angler  
Crissy Miyake  
Mickey Mohler  
Newport Beverage  
Jay Osman  
Perry County Chamber  
of Commerce  
Joanne Pinaire  
Francis Ranck  
Ann Shull  
Spiral Path Farms  
The Englewood  
U-Neek-O

## Fundraiser Sponsors

Jane & Bill Allis  
Rose & Paul Anderson  
Artisan Pizza  
Janice & Dominic Bailor  
Bob & Edna Baker  
Paul & Teena Beutel  
Laura Campbell  
Jane Clouser  
Jon & Jasmine Colbert  
Baird & Mary Jane Collins  
Sandra Comp  
Cramer Law Office  
Liz Dudley  
Marylou Dudley  
Timothy & Jessie Ellis  
Helen Ernest  
Charles & Debra Fleisher

Beverly Frankeny  
Lois Lehrman Grass  
Diana Gregory  
Hengst Family Dental  
Frances Hershey  
Highmark  
Ollie Hopkins  
Kurt & Amie Hower  
In Memory of VL Latta  
Corinna Jablonski  
Debra Kreiger  
Anita Kresge  
Devera Lang  
Mary Ludt  
Sam Lunetta & Bonnie Bisgeier  
Thomas & Donna Margetts  
Steve & Laura Messner  
Mickey Mohler  
Marie Morrison  
Courtney Myers  
Newport Beverage  
Newport Civic Club  
Joanne Pinaire & Kevin Hortens  
Judith Rich  
Bill & Marti Roberts  
Debra Roush  
Ann & Dick Shull  
The Church of the Nativity  
Tracy Meisinger-Troutman  
Irene VanBuskirk  
Tom & Carol Vracarich

## National Arts Marketing Project Conference

Americans for the Arts

## Perry Portraits Partner

Jane Hoover

## Technology Update

The Donald B. & Dorothy L.  
Stabler Foundation

## Youth Art Day

The Hall Foundation  
Sheetz

## JOIN OUR BOARD OF DIRECTORS



PCCA seeks passionate and conscientious volunteer board members to **LEAD** and **STRENGTHEN** our programs and to **ENGAGE** and **BUILD** community through the arts.

If you can contribute your time and leadership and are interested in exploring this opportunity, please visit [perrycountyarts.org/about](http://perrycountyarts.org/about) to complete the Board Application or email [jasmine@perrycountyarts.org](mailto:jasmine@perrycountyarts.org) for more details.

# THANK YOU VOLUNTEERS!

Thank you to the following volunteers for donating their time and talent.  
These lists include logged volunteer hours from July 1 to December 31, 2020

Paul Beutel  
Teena Beutel  
Judy Boudier  
Laura Campbell  
Laurie Jean Houck

Jessie Ellis  
Kurt Hower  
Patti McLaughlin  
Jodie Meglio  
Andy Mills

Lynne Mitchell  
Lynne Reeder  
Ann Shull  
Karen Smith  
Bryce Stambaugh

Richard Steffy  
Sara Sutton  
Jeff Trace  
Robin Wheeler  
Brett Ziegler

# SUPPORTERS OF THE ARTS



## ORRSTOWNBANK

### Perry County Locations:

403 North Market Street      1 South Carlisle Street  
Duncannon, PA 17020      New Bloomfield, PA 17068  
  
15 North 2nd Street  
Newport, PA 17074



**WANT TO BE A SUPPORTER OF THE ARTS?**

Email [missy@perrycountyarts.org](mailto:missy@perrycountyarts.org) for more details.