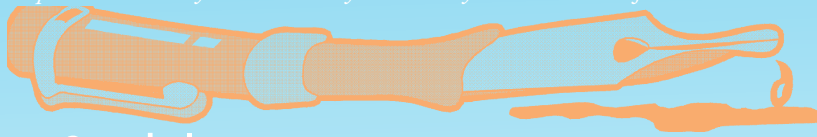


Sophie Awards for Poetic Excellence

Sponsored by the Perry County Council of the Arts



Guidelines

Deadline: All entries must reach the Perry County Council of the Arts or be postmarked by **February 3rd, 2012**.

Entry Fee: \$4 per page, three poem maximum. Each poem must be on its own page. Make check payable to: **PCCA**

Mail entries to: Sophie Awards
PCCA
PO Box 354
Newport, PA 17074

Entry qualifications:

- Entrants must be Perry County residents or members of PCCA.
- All entries must be the original work of the contestant.
- Poems that have won prizes elsewhere may not be submitted to this contest.
- Poems that are currently entered into other competitions may not be submitted.

Format:

- Poems may be free or formal verse.
- Poems may represent any subject
- Up to four pages (8 1/2" x 11") total may be submitted, however only a total of up to three poems may be submitted.

Poems must be typewritten or computer-generated on unlined white paper. Handwritten poems will be disqualified.

DO NOT type or write your name on the same sheet as your poem. Include with your entry a typed personal information sheet with the following:

- Your name, address, phone number, and email address, if available.
- The title and first line of each poem you have entered.
- Be sure to keep copies of your poems. Entries will not be returned.

Prizes:

Perry County Poet Laureate 2011: The title will be bestowed only on a resident of Perry County.

This honor includes a certificate signed by the Perry County Commissioners, and a cash prize of \$100. The winning entry will receive publication in *The Artsquarter*. The Poet Laureate will be a featured reader/speaker at various county and Arts Council events throughout the year of her/his reign, and carries an ambassadorial mantle of responsibility to promote and enhance the literary arts in Perry County.

1st Prize: \$50

2nd Prize: \$20

3rd Prize: \$15

} plus a framed certificate, and publication in *The Artsquarter*.

Honorable Mention: a framed certificate

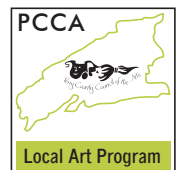
Kenneth P. Allen Award: \$25, framed certificate, and publication in *The Artsquarter*.

Entries competing for this award should follow the regular guidelines plus the following: The triolet is a short poem of eight lines with only two rhymes used throughout. The requirements of this fixed form are straightforward: the first line is repeated in the fourth and seventh lines; the second line is repeated in the final line; and only the first two end-words are used to complete the tight rhyme scheme. Thus, the poet writes only five original lines, giving the triolet a deceptively simple appearance: ABaAabAB, where capital letters indicate repeated lines. At the top of the page on which your poem is typed, please type the words KENNETH P. ALLEN COMPETITION.

Sophie's Reaction Writers Group announces its 14th Annual Poetry Contest, open to all Perry County poets and PCCA members. Winning entries will be published in the Arts Council's newsletter, *The Artsquarter*. All winning entrants are invited to read their work at the PCCA Coffeehouse in April 2012. Prizes will be presented during the evening's awards ceremony. Please read the following guidelines carefully. Entries that do not conform to the guidelines will be ineligible.



This year's judge will be Harrisburg poet Gene Hosey.



The Perry County Council of the Arts reserves the right to publish any of the winning entries in perpetuity, in any of its various publications and/or promotional materials, without payment to the author(s). Perry County Council of the Arts agrees to credit the author(s) with every use. The author(s) retains the right to publish the winning entry or submit it for competition elsewhere (in accordance with other contest guidelines). Entry in this contest (The 14th Annual Sophie Awards for Poetic Excellence) constitutes agreement on the part of the author(s) to these terms.